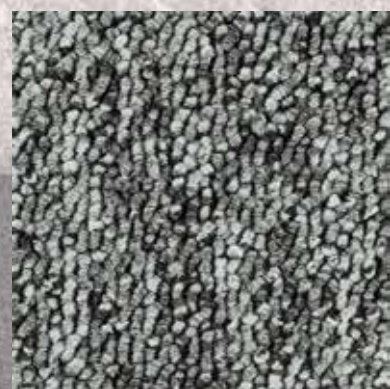




## Armonia 400

Structure your spaces,  
create harmony

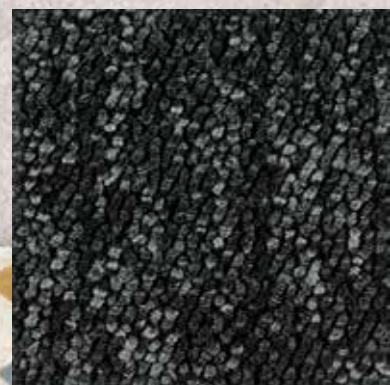
**Gerflor**<sup>®</sup>



9501 Ombrà  
LRV : 31.9 /NCS : 6500-N



9701 Titanio  
LRV : 37.4 /NCS : 8500-N



9901 Oxford  
LRV : 44.1 /NCS : 9000-N



1801 Indigo  
LRV : 45.3 /NCS : 7020-R80B



7801 Cacao  
LRV : 41.4 /NCS : 8005-Y80R



6501 Beige  
LRV : 35.0 /NCS : 7008-Y80R

Samples  
Order



Class 31



# Armonia 400



**Easy mix with Gerflor collections**  
(Creation & Saga<sup>2</sup>)



**Tile format**  
500×500 mm



**Light commercial use**



**Indoor Air Quality**  
TVOC <100µg/m<sup>3</sup>\*



**Installation**  
Monolithic or quarter-turn



**Adhesive free possible**  
with connectors  
(B connect)



Z0014509

## Armonia 400

### Description

Nature	ISO 2424	-	Loose-laid carpet tile
Construction	ISO 2424	-	Tufted loop pile
Pile Material	-	-	100% Polypropylene
Backing	ISO 2424	-	Bitumen
Gauge	ISO 1763	-	1/10
Pile Weight	ISO 2424	g/m <sup>2</sup>	400
Surface Pile Weight	ISO 2424	g/m <sup>2</sup>	240
Stitch Density	ISO 1763	tufts/m <sup>2</sup>	145 800
Total Weight	ISO 8543	g/m <sup>2</sup>	3790
Total Thickness	ISO 1765	mm	5.3
Pile Height	ISO 1766	mm	2.3
Size	ISO 24342	cm	50 × 50

### Classification

European Classification	EN 1307	class	31
Fire Rating	EN 13 501-1	class	Bfl-s1 affixed on cement
Static Electrical Propensity	ISO 6536	kV	≤2
Luxury Rating	EN 1307	class	LC1
Slip resistance	EN 13893	μ	≥0.3

### Performances

Dimensional Stability	EN 986	%	≤0.2
Thermal Resistance	ISO 8302	m <sup>2</sup> C°/W	≤0,09 (0,0578)
Color Fastness	EN ISO 105 - B02	degree	≥6

### Environment/Indoor air quality

TVOC after 28 days	EN 16516	micrograms/m <sup>3</sup>	≤100
Label GuT	n° GUT - Prodis		BFACFED8

### CE Marking



EN 14041



### Packaging

Tiles per Box	unit	24
Tiles per Box	m <sup>2</sup>	6
Weight per Box	kg	22,96
Box per Pallet	unit	24
Pallet	m <sup>2</sup>	144

IMPORTANT: The information contained in this document is valid from 01/01/2025 and is subject to change at any time without notice. In the context of constantly changing technology, our customers are responsible, prior to any use, for checking with us that this document is the version in force.

## we care / we act Our Commitments for a Sustainable future



**CARBON FOOTPRINT\***  
-20 % kg CO<sub>2</sub> equivalent/m<sup>2</sup> between 2020 and 2025



**BIOSOURCED CONTENT\*\***  
10 % by 2025



**RECYCLED CONTENT**  
30 % by 2025



**ADHESIVE FREE\*\*\***  
35 % by 2025



**ANNUAL VOLUME RECYCLED**  
60 000 t by 2025



\* Scopes 1 and 2 defined in the GHG protocol \*\* % of activity with biosourced materials \*\*\* % of activity - adhesive free solution